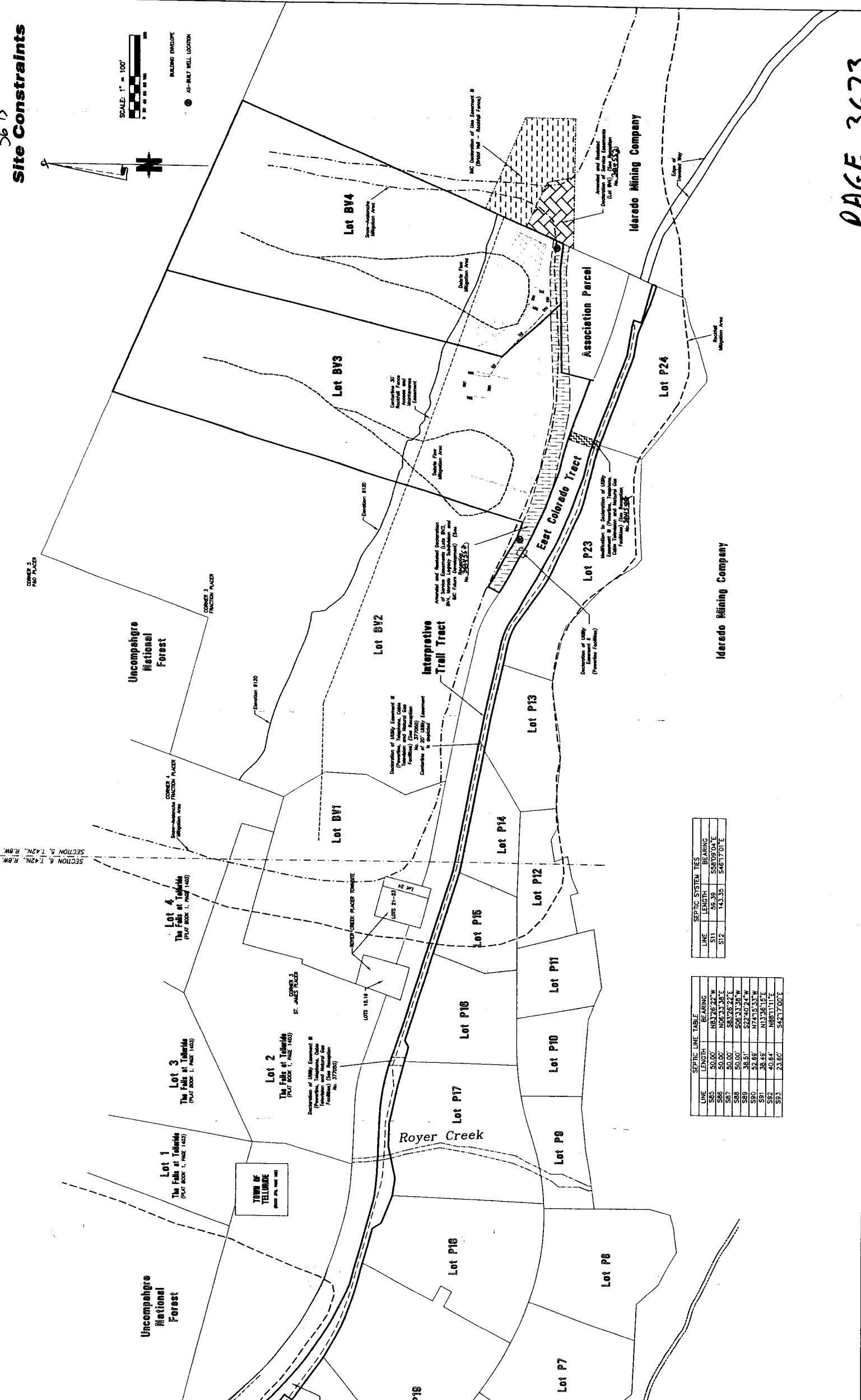
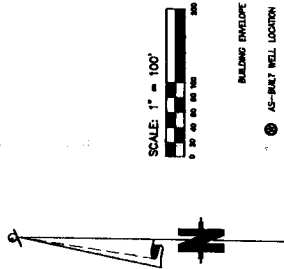


3673

Site Constraints



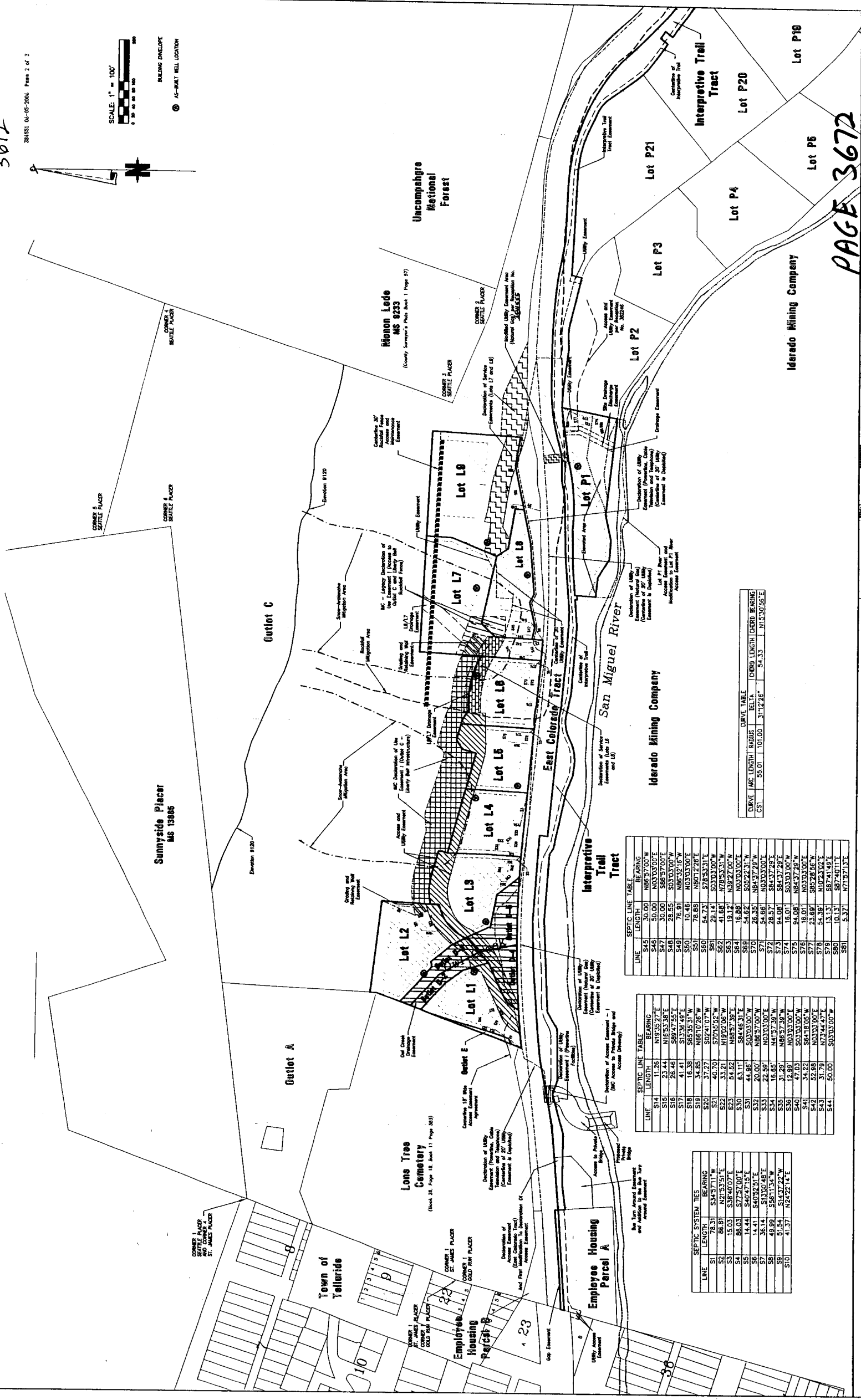
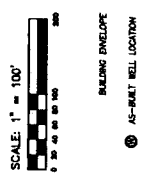
SEPTIC LINE TABLE

LINE	LENGTH	BEARING
S45	50.00'	N83°26'22"W
S46	50.00'	N06°33'38"E
S47	50.00'	S83°26'22"E
S48	50.00'	S08°33'38"W
S49	38.51'	S22°40'24"W
S50	52.89'	N74°15'33"W
S51	38.48'	N33°56'15"E
S52	40.64'	N88°11'11"E
S53	23.60'	S42°17'00"E

SEPTIC SYSTEM TIES

LINE	LENGTH	BEARING
S11	55.39	S84°09'04"E
S12	143.35	S46°57'01"E

3672



DRIVE TABLE

LINE	ARC LENGTH	RADIUS	CHORD	LENGTH	CHORD BEARING
S1	55.01	101.00	31.1228°	54.35	N153038.5°E

SEPTIC LINE TABLE

LINE	LENGTH	BEARING
S48	50.00	N030300°E
S49	50.00	N030300°E
S50	50.00	N030300°E
S51	50.00	N030300°E
S52	50.00	N030300°E
S53	50.00	N030300°E
S54	50.00	N030300°E
S55	50.00	N030300°E
S56	50.00	N030300°E
S57	50.00	N030300°E
S58	50.00	N030300°E
S59	50.00	N030300°E
S60	50.00	N030300°E
S61	50.00	N030300°E
S62	50.00	N030300°E
S63	50.00	N030300°E
S64	50.00	N030300°E
S65	50.00	N030300°E
S66	50.00	N030300°E
S67	50.00	N030300°E
S68	50.00	N030300°E
S69	50.00	N030300°E
S70	50.00	N030300°E
S71	50.00	N030300°E
S72	50.00	N030300°E
S73	50.00	N030300°E
S74	50.00	N030300°E
S75	50.00	N030300°E
S76	50.00	N030300°E
S77	50.00	N030300°E
S78	50.00	N030300°E
S79	50.00	N030300°E
S80	50.00	N030300°E
S81	50.00	N030300°E

SEPTIC LINE TABLE

LINE	LENGTH	BEARING
S14	11.26	N195527°E
S15	23.44	N185538°E
S16	28.46	S894735°E
S17	14.38	S733849°E
S18	14.38	S681038°W
S19	34.85	N681038°W
S20	37.27	S024107°W
S21	40.70	S704592°W
S22	33.21	N190206°W
S23	54.62	N685739°E
S24	63.11	S844631°E
S25	44.96	S030300°W
S26	20.00	N865700°W
S27	22.59	N030300°E
S28	16.65	N415739°W
S29	31.28	N030300°E
S30	12.99	N030300°E
S31	47.03	S030300°E
S32	16.01	N842728°E
S33	16.01	N842728°E
S34	23.68	S852845°W
S35	54.38	N023302°E
S36	13.13	S874148°E
S37	10.13	S874011°E
S38	5.37	N715713°E

SEPTIC SYSTEM TIES

LINE	LENGTH	BEARING
S1	78.31	S445711°W
S2	86.81	N215351°E
S3	15.03	S384007°E
S4	86.03	S72700°E
S5	14.44	S404718°E
S6	14.41	S403251°E
S7	35.14	S130048°E
S8	49.99	S581154°W
S9	51.54	S143722°W
S10	41.37	N282241°E

PAGE 3672

